

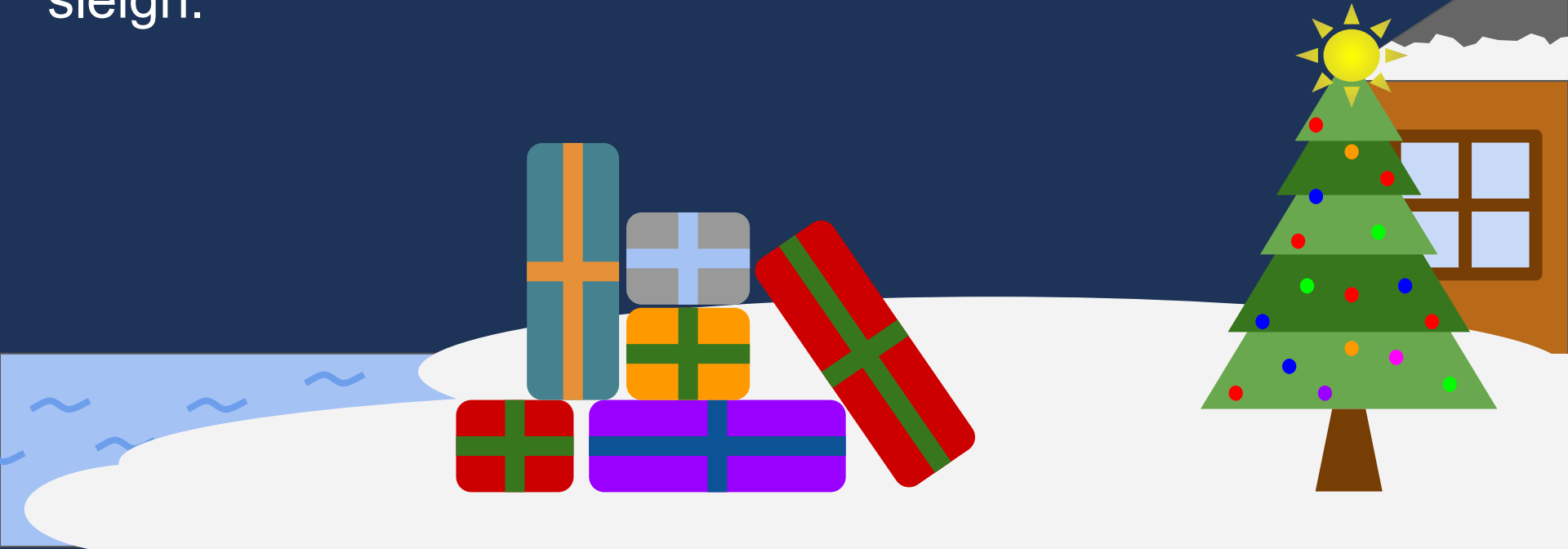
Santa Climate is Comin' to Town!



It's near Christmas time again, and Santa is making preparations for his long journey.



But with people not taking care of the environment, Santa's plans have been messed up. For example, he had just organized all of these presents so they could be loaded onto his sleigh.



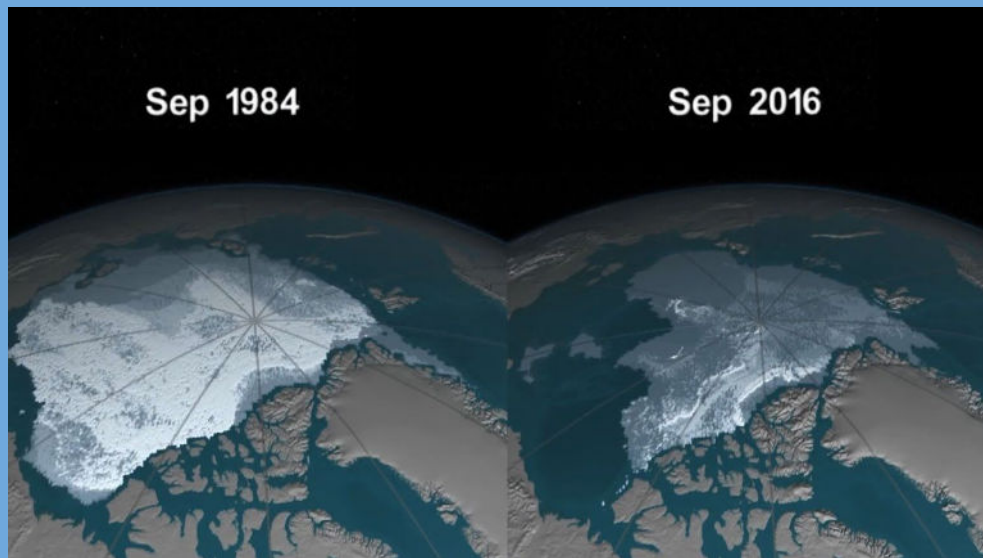
But a melting ice sheet caused them to float away! Help Santa quickly sort another batch of presents by size.



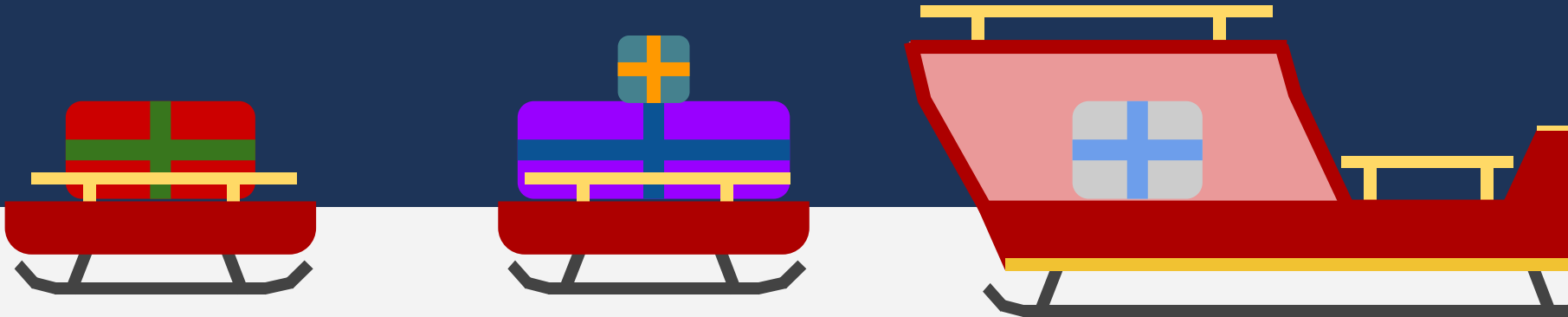
But
an
p

Fact:

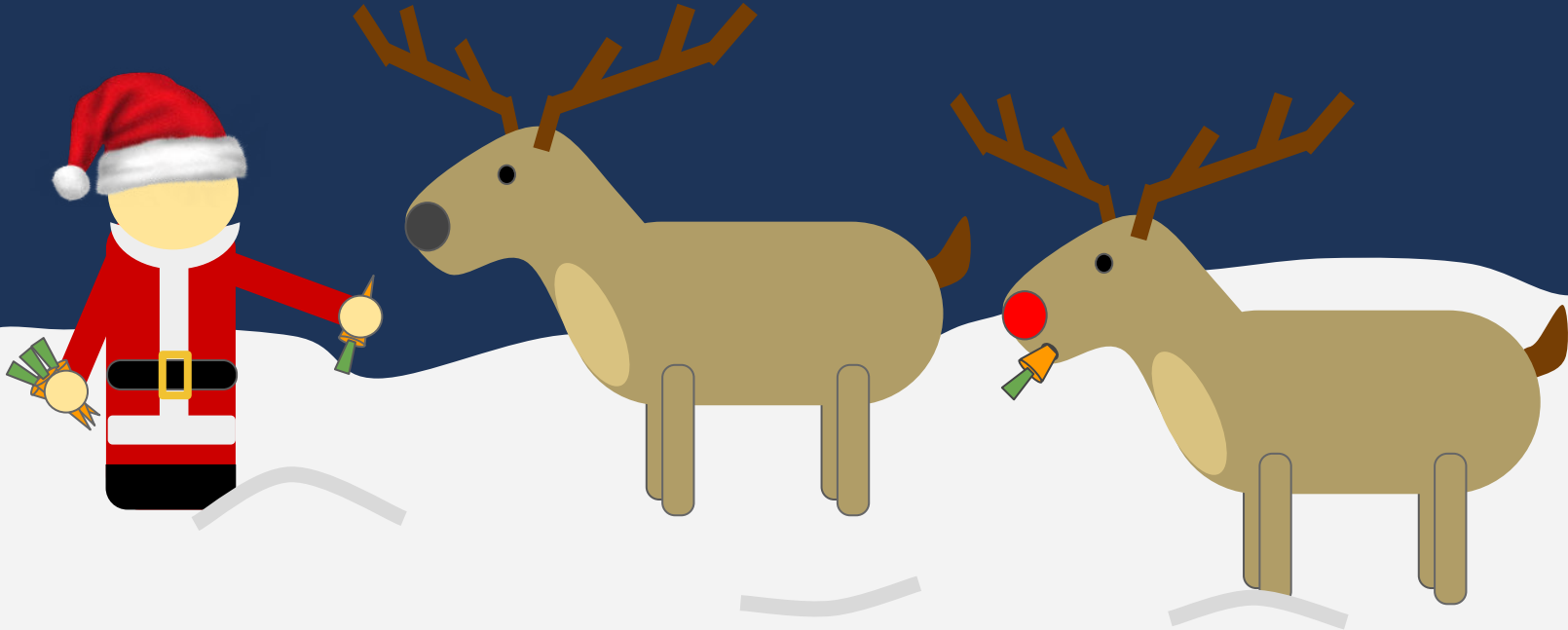
The Arctic Sea lost an estimated 7.6 trillion tonnes of ice between 1994 and 2017. That's over 2,000 times the weight of the asteroid that killed the dinosaurs!



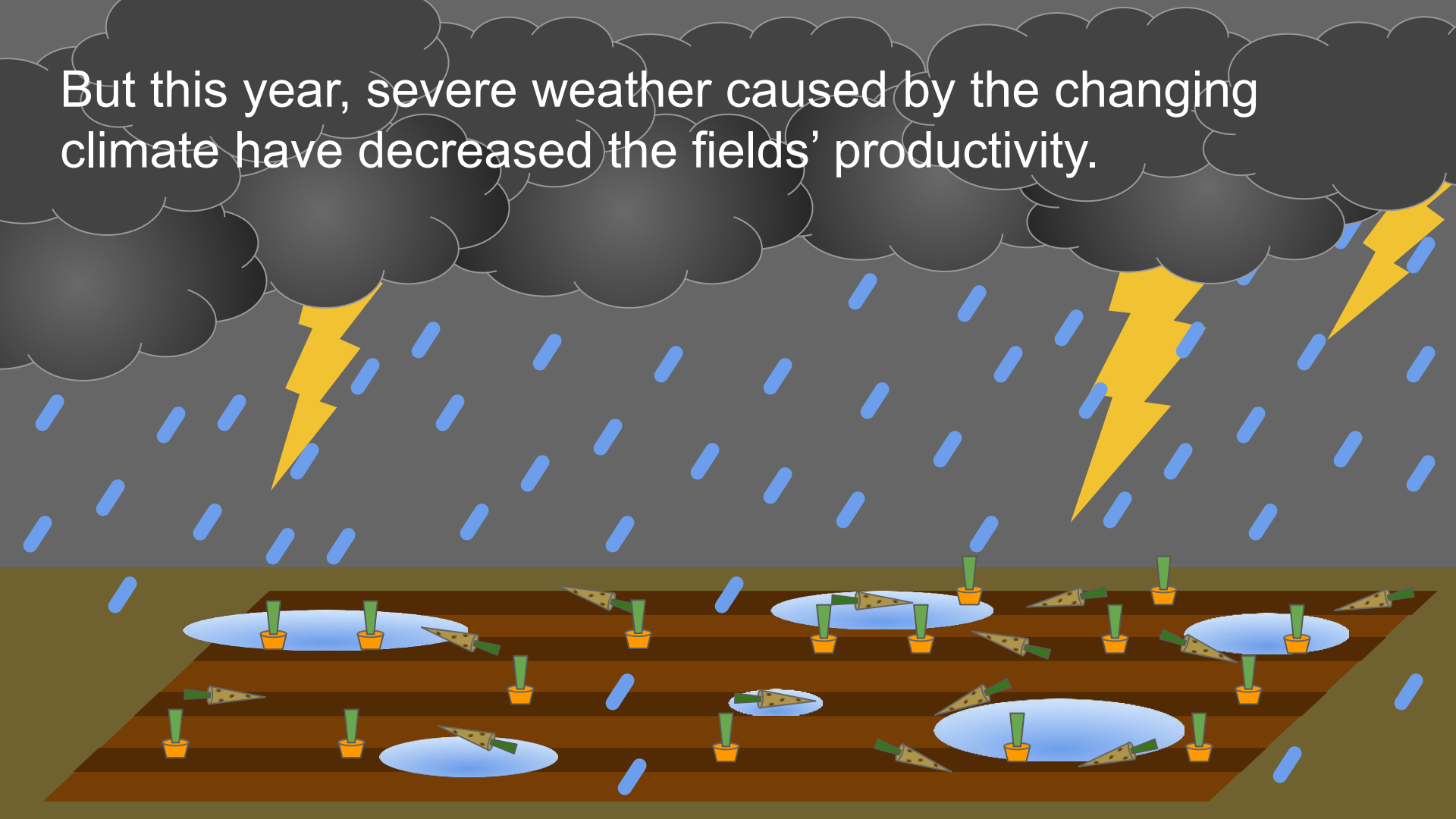
Drag and drop the new gifts between the smaller sleds to sort them all onto Santa's large sleigh. For stability, a wider gift cannot be placed over a smaller one.



Before Santa departs, he always gives his reindeers plenty of carrots to eat for the journey.



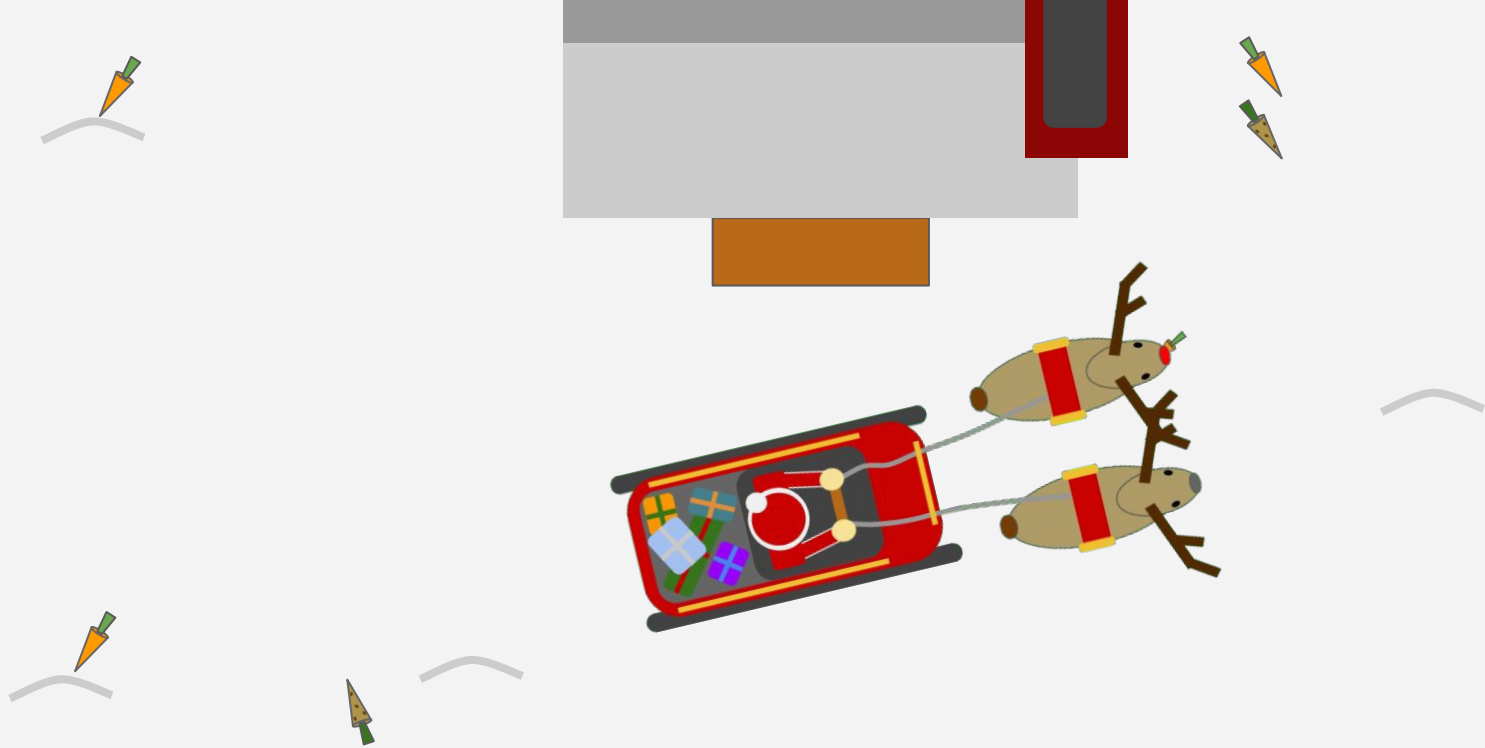
But this year, severe weather caused by the changing climate have decreased the fields' productivity.




Fact:

In 2012, premature budding from warmer winters (caused by global warming) led to \$220 million in losses of Michigan cherries.





Help Santa scavenge for food in a local area before returning home. Note that travelling a lot or eating rotten carrots will consume food. 



Now that everything is in place, Santa departs on his journey on his trusty sleigh, guided by the famous reindeer Rudolph.

But factories have been polluting the air. Help Santa navigate the skies while avoiding smog clouds!



Fact:

One third of deaths from stroke, lung cancer and heart disease are due to air pollution.

Breathing in smog in New Delhi is equivalent to smoking 44 cigarettes a day.



Unfortunately, there is just too much smog, even with Rudolph's bright red nose.



Santa decides to fly the sleigh much lower, above the water to avoid the pollution.



However, the waters are filled with trash and litter. Unable to waste anymore time, he dispatches you to clear the waters ahead. Pick up all the trash in case it gets tangled in the sleigh.



Fact:

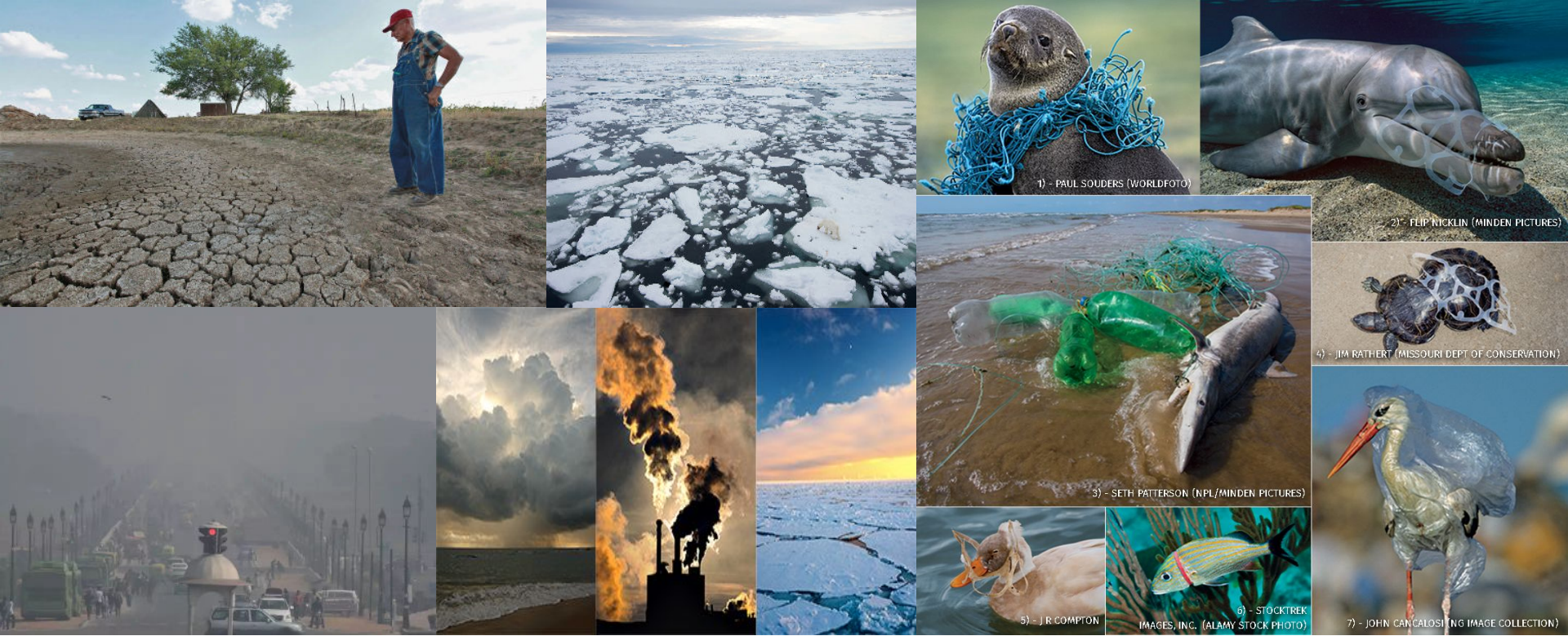
Every minute, 1 million plastic bottles are purchased.

Every year, we use 5 trillion plastic bags and produce 400 million tonnes of plastic waste.



Congratulations! You've helped Santa save Christmas.
However, if trends continue, one day Santa might not
be able to deliver the presents.

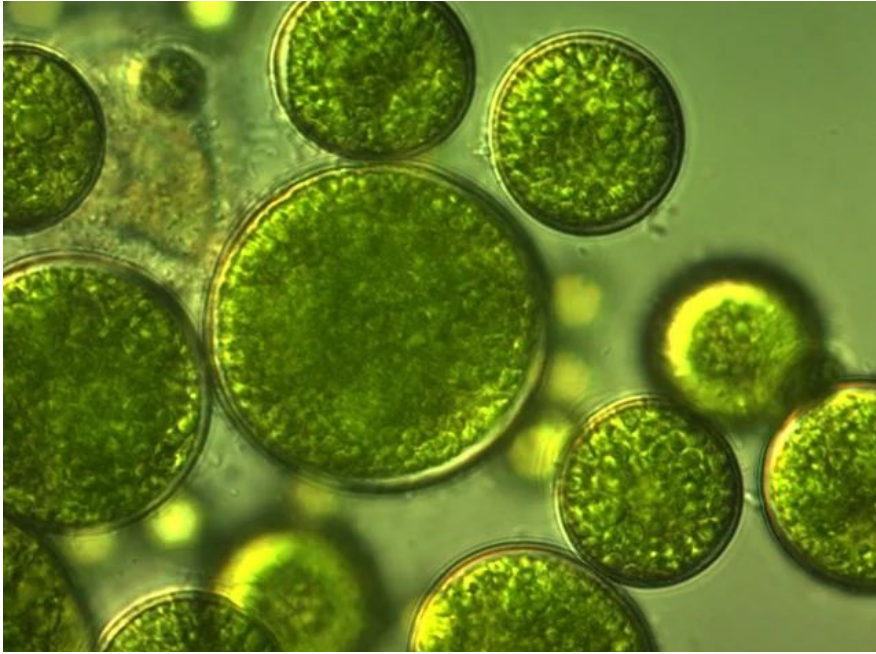




Many of our poor environmental choices will affect not just Christmas, but the daily lives of thousands of people and animals.



Melting ice caps and climate change are affecting animal migration patterns. For example, Blacktip sharks are now migrating earlier and farther north in search of cooler waters.



Smog often blocks sunlight which is necessary for algae and the ecosystem to thrive. Excess carbon dioxide increases ocean acidity, destroying marine diversity.



Plastic pollution continues to be a major problem for wildlife. As we dump our trash into the oceans, it can trap marine animals or choke them if ingested.

How you can help!

Use less wrapping paper or recycle it



Send electronic cards instead of buying paper ones



Buy gifts that are environmentally friendly or last longer (cheap toys often end up in the landfill)



Take public transportation to visit friends and family



Thank you for playing!

